



Product Catalog

A world class profession mechanical manufacturing company





(NB22)

Product Specification Description

- Dimensions : L293*W160*H352 (mm)
- Color : Black
- Panel : Black ABS panel with logo
- Cables : 2 * USB 1.0 / 1 * USB 3.0 with HD
- Accessory Pack : Standard screw pack
- Gross Weight : 2.5 kg
- Compatibility : ATX, Micro ATX

■ U/P USD\$

- MOQ : 500pcs
- DELIVERY TERM : FCA Shenzhen

(NB20)

Product Specification Description

- Dimensions : L293*W160*H352 (mm)
- Color : Black
- Panel : Black ABS panel with logo
- Cables : 2 * USB 1.0 / 1 * USB 3.0 with HD
- Accessory Pack : Standard screw pack
- Gross Weight : 2.5 kg
- Compatibility : ATX, Micro ATX

■ U/P USD\$

- MOQ : 500pcs
- DELIVERY TERM : FCA Shenzhen



(U03)

Product Specification Description

- Dimensions : L336*W190*H423 (mm)
- Color : Black
- Panel : Black ABS
- Cables : 2* USB 1.0 / 1 * USB 3.0
- Accessory Pack : Standard screw pack
- Gross Weight : 3.6 kg
- Compatibility : ATX, Micro ATX

■ U/P USD\$

- MOQ : 500pcs
- DELIVERY TERM :
FCA Shenzhen

(U04)

Product Specification Description

- Dimensions : L335*W190*H428 (mm)
- Color : Black
- Panel : Black ABS
(RGB light strip)
- Cables : 2* USB 1.0 / 1 * USB 3.0
- Accessory Pack : Standard screw pack
- Gross Weight : 3.8 kg
- Compatibility : ATX, Micro ATX

■ U/P USD\$

- MOQ : 500pcs
- DELIVERY TERM :
FCA Shenzhen



(U05)

Product Specification Description

- Dimensions : L335*W190*H428 (mm)
- Color : Black
- Panel : Black ABS (RGB light strip)
- Cables : 2* USB 1.0 / 1 * USB 3.0
- Accessory Pack : Standard screw pack
- Gross Weight : 3.8 kg
- Compatibility : ATX, Micro ATX

■ U/P USD\$

- MOQ : 500pcs
- DELIVERY TERM : FCA Shenzhen

(U10)

Product Specification Description

- Dimensions : L335*W190*H428 (mm)
- Color : Black
- Panel : Black ABS (RGB light strip)
- Cables : 2* USB 1.0 / 1 * USB 3.0
- Accessory Pack : Standard screw pack
- Gross Weight : 3.7 kg
- Compatibility : ATX, Micro ATX

■ U/P USD\$

- MOQ : 500pcs
- DELIVERY TERM : FCA Shenzhen



(U08)

Product Specification Description

- Dimensions : L365*W190*H428 (mm)
- Color : Black
- Panel : Black ABS
- Cables : 2* USB 1.0 / 1 * USB 3.0
- Accessory Pack : Standard screw pack
- Gross Weight : 3.7 kg
- Compatibility : ATX, Micro ATX

■ U/P USD\$

- MOQ : 500pcs

■ DELIVERY TERM :
 FCA Shenzhen

(U09)

Product Specification Description

- Dimensions : L365*W190*H428 (mm)
- Color : Black
- Panel : Black ABS
 (RGB light strip)
- Cables : 2* USB 1.0 / 1 * USB 3.0
- Accessory Pack : Standard screw pack
- Gross Weight : 3.8 kg
- Compatibility : ATX, Micro ATX

■ U/P USD\$

- MOQ : 500pcs

■ DELIVERY TERM :
 FCA Shenzhen



(U12)

Product Specification Description

- Dimensions : L335*W190*H428 (mm)
- Color : Black
- Panel : Black ABS
(RGB light strip)
- Cables : 2* USB 1.0 / 1 * USB 3.0
- Accessory Pack : Standard screw pack
- Gross Weight : 3.8 kg
- Compatibility : ATX, Micro ATX

■ U/P USD\$

- MOQ : 500pcs
- DELIVERY TERM :
FCA Shenzhen

(U13)

Product Specification Description

- Dimensions : L335*W190*H428 (mm)
- Color : Black
- Panel : Glass
- Cables : 2* USB 1.0 / 1 * USB 3.0
- Accessory Pack : Standard screw pack
- Gross Weight : 4.1 kg
- Compatibility : ATX, Micro ATX

■ U/P USD\$

- MOQ : 500pcs
- DELIVERY TERM :
FCA Shenzhen



(AX12)

Product Specification Description

- Dimensions : L385*W182*H415 (mm)
- Color : Black
- Panel : Black ABS
- Cables : 2* USB 1.0 / 1 * USB 3.0
- Accessory Pack : Standard screw pack
- Gross Weight : 3.8 kg
- Compatibility : ATX, Micro ATX

■ U/P USD\$

- MOQ : 500pcs
- DELIVERY TERM : FCA Shenzhen

(AX13)

Product Specification Description

- Dimensions : L385*W182*H415 (mm)
- Color : Black
- Panel : Black ABS
- Cables : 2* USB 1.0 / 1 * USB 3.0
- Accessory Pack : Standard screw pack
- Gross Weight : 3.8 kg
- Compatibility : ATX, Micro ATX

■ U/P USD\$

- MOQ : 500pcs
- DELIVERY TERM : FCA Shenzhen



(T33)

Product Specification Description

- Dimensions : L295*W165*H350 (mm)
- Color : Black
- Panel : Black ABS
(RGB light strip) with logo
- Cables : 2* USB 1.0
- Accessory Pack : Standard screw pack
- Gross Weight : 1.5 kg
- Compatibility : ATX, Micro ATX

■ U/P USD\$

■ MOQ : 500pcs

■ DELIVERY TERM :
FCA Shenzhen



(E500)

Product Specification Description

- Dimensions : L435*W213*H478 (mm)
- Color : Black
- Panel : Black ABS
- Cables : 2* USB 1.0 / 1 * USB 3.0
- Accessory Pack : Standard screw pack
- Gross Weight : TBD
- Compatibility : E-ATX, ATX, Micro ATX, ITX

■ U/P USD\$

■ MOQ : 500pcs

■ DELIVERY TERM :
FCA Shenzhen



(F355)

Product Specification Description

- Dimensions : L355.5*W*200*H438 (mm)
- Color : Black
- Panel : Black ABS
- Cables : 2* USB 1.0 / 1 * USB 3.0
- Accessory Pack : Standard screw pack
- Gross Weight : TBD
- Compatibility : ATX, Micro ATX, ITX

■ U/P USD\$

■ MOQ : 500pcs

■ DELIVERY TERM :
FCA Shenzhen



(I500)

Product Specification Description

- Dimensions : L320*W190*H420 (mm)
- Color : Black
- Panel : Black ABS
- Cables : 1* USB 1.1 / 2 * USB 3.0
- Accessory Pack : Standard screw pack
- Gross Weight : TBD
- Compatibility : ATX, Micro ATX, ITX

■ U/P USD\$

- MOQ : 500pcs
- DELIVERY TERM :
FCA Shenzhen

(N100)

Product Specification Description

- Dimensions : L436.9*W225*H434.5 (mm)
- Color : Black
- Panel : Black ABS
- Cables : 1* USB 1.0 / 1 * USB 3.0
- Accessory Pack : Standard screw pack
- Gross Weight : TBD
- Compatibility : ATX, Micro ATX, ITX

■ U/P USD\$

- MOQ : 500pcs
- DELIVERY TERM :
FCA Shenzhen



(R240)

Product Specification Description

- Dimensions : L365*W220*H395 (mm)
- Color : Black
- Panel : Black ABS
- Cables : 2* USB 1.0 / 1 * USB 3.0
- Accessory Pack : Standard screw pack
- Gross Weight : TBD
- Compatibility : Micro ATX, ITX

■ U/P USD\$

- MOQ : 500pcs

■ DELIVERY TERM :
FCA Shenzhen

(W100)

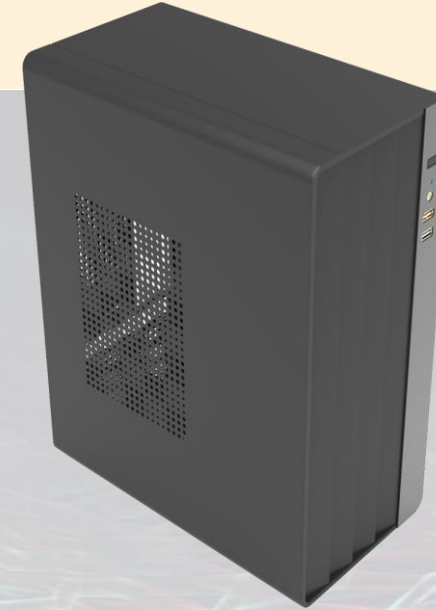
Product Specification Description

- Dimensions : L410*W225*H480 (mm)
- Color : Black
- Panel : Black ABS
- Cables : 2* USB 1.1 / 1 * USB 3.0
- Accessory Pack : Standard screw pack
- Gross Weight : TBD
- Compatibility : E-ATX, ATX, Micro ATX, ITX

■ U/P USD\$

- MOQ : 500pcs

■ DELIVERY TERM :
FCA Shenzhen



(X500)

Product Specification Description

- Dimensions : L435*W240*H480 (mm)
- Color : Black
- Panel : Black ABS
- Cables : 2* USB 1.0 / 1 * USB 3.0 / Type C
- Accessory Pack : Standard screw pack
- Gross Weight : TBD
- Compatibility : ATX, Micro ATX, ITX

■ U/P USD\$

- MOQ : 500pcs
- DELIVERY TERM : FCA Shenzhen

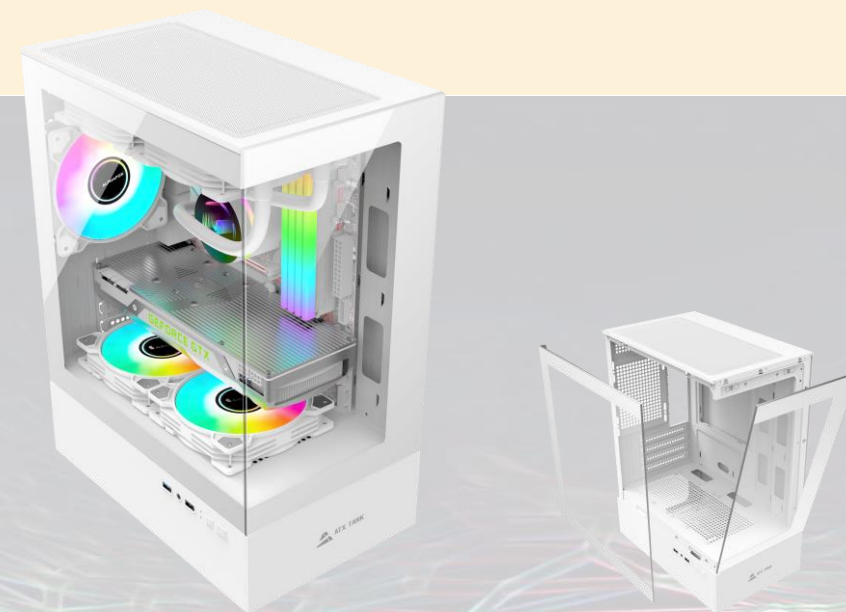
(XPS)

Product Specification Description

- Dimensions : L291*W165*H351 (mm)
- Color : Black
- Panel : Black ABS
- Cables : 1* USB 1.0 / 1 * USB 3.0
- Accessory Pack : Standard screw pack
- Gross Weight : TBD
- Compatibility : E-ATX, ATX, Micro ATX, ITX

■ U/P USD\$

- MOQ : 500pcs
- DELIVERY TERM : FCA Shenzhen



(H60 Black)

Product Specification Description

- Dimensions : L310*W195*H422 (mm)
- Color : Black
- Panel : Silkscreen glass
- Cables : 1* USB 1.0 / 1 * USB 3.0 with HD
- Accessory Pack : Standard screw pack
- Gross Weight : 3.6 kg
- Compatibility : ATX, Micro ATX, ITX

■ U/P USD\$

- MOQ : 500pcs
- DELIVERY TERM :
FCA Shenzhen

(H60 White)

Product Specification Description

- Dimensions : L310*W195*H422 (mm)
- Color : White
- Panel : Silkscreen glass
- Cables : 1* USB 1.0 / 1 * USB 3.0 with HD
- Accessory Pack : Standard screw pack
- Gross Weight : 3.6 kg
- Compatibility : ATX, Micro ATX, ITX

■ U/P USD\$

- MOQ : 500pcs
- DELIVERY TERM :
FCA Shenzhen



(CR480)

Product Specification Description

- Dimensions : L465*W205*H422 (mm)
- Color : Black
- Panel : Black (SGCC Painting)
- Cables : 2 * USB 3.0
- Accessory Pack : Standard screw pack
- Compatibility : ATX, Micro ATX, Mini ITX

■ U/P USD\$

- MOQ : 980pcs
- DELIVERY TERM :
FCA Shenzhen

(CR280)

Product Specification Description

- Dimensions : L320*W204*H320 (mm)
- Color : Black
- Panel : Black (SGCC Painting)
- Cables : 2 * USB 3.0
- Accessory Pack : Standard screw pack
- Compatibility : Mini-ITX

■ U/P USD\$

- MOQ : 1450pcs
- DELIVERY TERM :
FCA Shenzhen